

J.HARVEST & FROST NEWS FOR THE SPRING 2019

J.HARVEST &FROST NEWS2019



J.HARVEST & FROST
CORPORATE SHIRTMAKER



We're all about fine work wear – we live and breathe it. Sure, we make other things too, but if you're looking for that perfect garment, that oozes functionality and comfort, you're looking in the right direction. We are however not only about function, we like to look good too.

We create clothing for every aspect of life. Our garments are not limited to working hours or a fancy dinner party every once in a while. No. We want you to live your life fully, without having to change into something less official or more comfortable. So, just roll up your sleeves and get messy, no matter if you're coming straight from work. And hey, no need to feel sloppy – we told you, we like to look good too, right?

We are constantly seeking new performances and reinventions for our products. This gives us control of every stage in the production, resulting in the high quality fabrics and the perfect cut. Something you experience when wearing a piece of our collection.



J.HARVEST & FROST
CORPORATE SHIRTMAKER

J.HARVEST &FROST NEWS2019

WWW.JHARVESTANDFROST.COM









REGULAR
2900101
S-4XL



SLIM FIT
2900102
S-XXL



WOMAN
2900103
XS-4XL

GREEN BOW 01



560 MID BLUE



100 WHITE



900 BLACK



600 NAVY



500 SKY BLUE



911 GREY

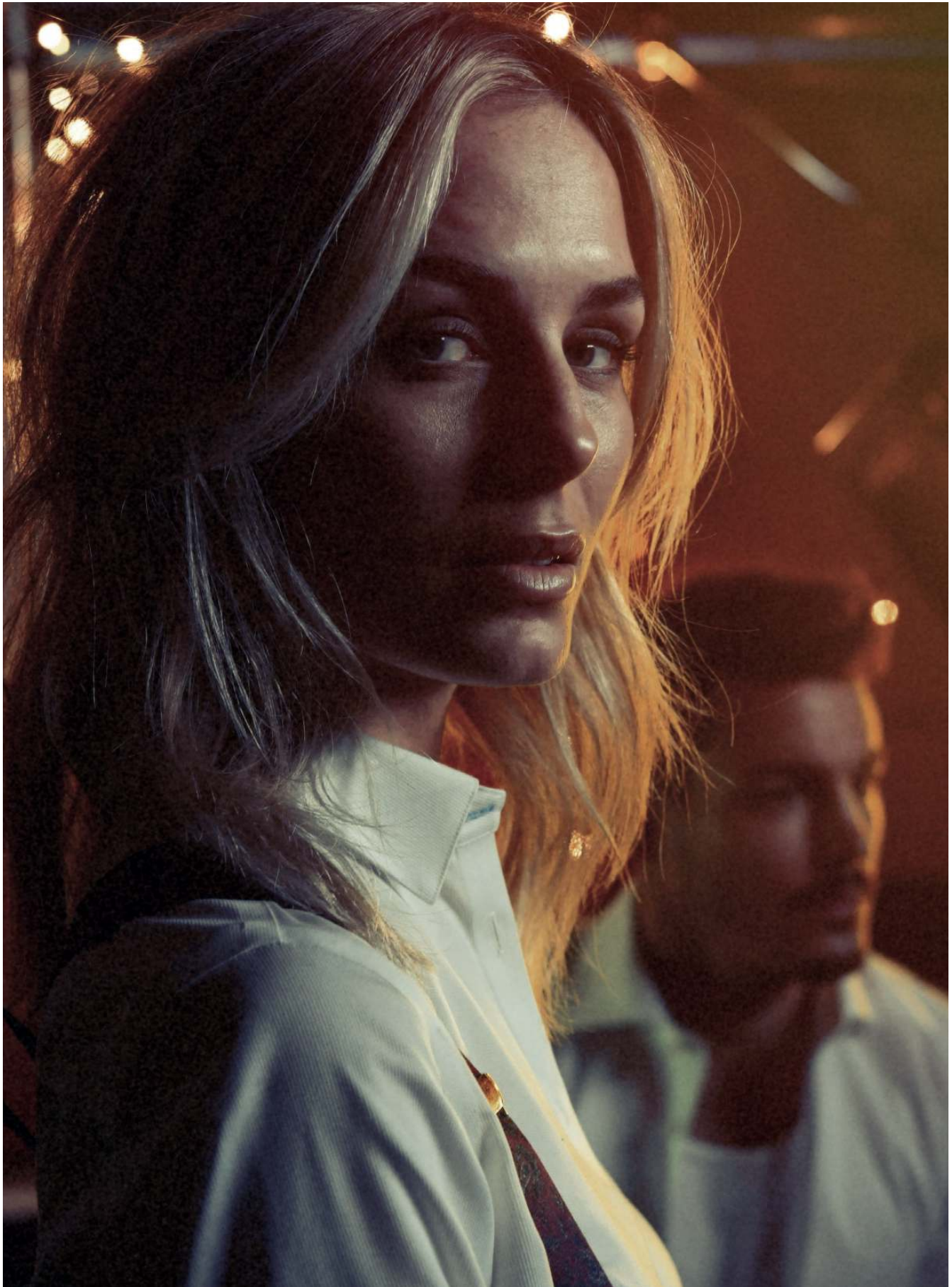
Nothing beats the clean look of a solid dress shirt.

But even at a solid color there are still some features that make our shirt stand out from the crowd. The shirt is crafted in our favorite high performance twill texture. This gives the perfect sheen to it, results in a substantial good hand feeling and makes it less transparent than similar white dress shirts. A split yoke in back, medium cut-away collar and a 35 mm. raised placket set the edge for this sharp, but classic shirt.

We even added a free matching handkerchief for you, so you can go all the way this time.

- GREEN BOW LINE.
- MATCHING HANDKERCHIEF TO HELP YOU SET THE STANDARD.
- SOLID COLORS. 100% COTTON, MACHINE WASHABLE. NON-IRON PATENTED ENVIRONMENTAL TREATMENT. LONG STAPLE 2-PLY COMPACT COTTON FOR THE BEST POSSIBLE RESULT.
- SPLIT BACK YOKE ENSURES SMOOTH CONTOURED SHOULDERS, AND A GREATER RANGE OF MOTION.

- TAPED MAIN-SEAMS HELP THE SHIRT LOOK SHARP AND NEAT WASH AFTER WASH. NO WRINKLES.
- SEMI CUT-AWAY COLLAR.
- LONG SLEEVE. SINGLE ANGEL-CUFF, WITH EXTRA BUTTONHOLE FOR CUFF LINKS.
- TALL, 4 MM-THICK BUTTONS FOR A SUBSTANTIAL AND MODERN FEELING.
- CURVED HEM.





REGULAR
2902901
S-4XL



SLIM FIT
2902902
S-XXL



WOMAN
2902903
XS-4XL

RED BOW 29



100 WHITE



500 SKY BLUE



The Bedford micro-cord structure in solid color gives the shirt class, and are well recommended for either business or a bit less formal occasions.

The fabric is well known for us, and is aiming to be one of our top 3 classics.

This time we added our new natural mechanical stretch performance to it. It allows the fabric to hold top grade non-iron performance, and ads greater movement with up to 12 % stretch the weft way.

The typical Redbow line-shirt. Classical, yet detailed, giving the shirt a modern sophisticated look.

- RED BOW LINE.
- SOLID COLOR, MICRO-CORD BEDFORD STRUCTURE.
- MECHANICAL STRETCH. 100% COTTON., MACHINE WASHABLE. NON-IRON PATENTED ENVIRONMENTAL TREATMENT. LONG STAPLE 2-PLY COMPACT COTTON FOR THE BEST POSSIBLE RESULT.
- SPLIT BACK YOKE ENSURES SMOOTH CONTOURED SHOULDERS, AND A GREATER RANGE OF MOTION.

- TAPED MAIN-SEAMS HELP THE SHIRT LOOK SHARP AND NEAT WASH AFTER WASH. NO WRINKLES.
- SEMI CUT AWAY COLLAR.
- LONG SLEEVE. SINGLE ANGEL-CUFF, WITH EXTRA BUTTONHOLE FOR CUFF LINKS.
- TALL, 4 MM-THICK BUTTONS GIVE A SUBSTANTIAL AND MODERN FEELING.
- CURVED HEM.





REGULAR
2914101
S-4XL



SLIM FIT
2914102
S-XXL



WOMAN
2914103
XS-4XL

PURPLE BOW 141



313 ORANGE CHECK



515 BLUE CHECK



616 NAVY CHECK

4-way stretch fabric with NON IRON treatment is another new and innovative performance made by us. With a 360 degree stretch ability, the shirt is as comfortable as a woven dress-shirt can get. It works with you in your every movement.

The shirt is crafted in light-weight soft hand-touched poplin. With versatile Mini-checks, this shirt suits all looks from the office to the less formal occasions

- PURPLE BOW LINE.
- POPLIN WEAVE, MINI-CHECKS PATTERN.
- 4 -WAY STRETCH. NON IRON
- 90% COTTON,10%SPANDEX.
- MACHINE WASHABLE.
- NON-IRON PATENTED ENVIRONMENTAL TREATMENT. LONG STAPLE 2-PLY COMPACT COTTON FOR THE BEST POSSIBLE RESULT.
- SPLIT BACK YOKE ENSURES SMOOTH CONTOURED SHOULDERS, AND A GREATER RANGE OF MOTION.

- TAPED MAIN-SEAMS HELP THE SHIRT LOOK SHARP AND NEAT WASH AFTER WASH. NO WRINKLES.
- MODERN CUT-AWAY COLLAR.WITH HIDDEN BUTTON DOWN.
- LONG SLEEVE. ROUND EDGE -CUFF, WITH EXTRA BUTTONHOLE FOR CUFF LINKS.
- CLASSIC, 2,5 MM-THICK BUTTONS,WITH PEARL IMITATION,FOR A LUXURIOUS LOOK
- CURVED HEM.





REGULAR
2903301
S-4XL



SLIM FIT
2903302
S-XXL



WOMAN
2903303
XS-4XL

INDIGO BOW 33



100 WHITE



500 SKY BLUE



310 ORANGE



500 SKY BLUE



500 SKY BLUE

Summer in a shirt. Tropical colors, authentic, characteristic wrinkling texture, casual, refined, vacation. All words describing our classical airy open weaved 100% linen shirt. The only shirt that deserves to be wrinkled and looks better this way.

The shirt ages with beauty and only improves over time.

So grab your gear, and get ready for summer.

- INDIGO BOW LINE.
- PLAIN WEAVE, SOLID 2 TONE COLOR.
- 100% LINEN..
- SUPERSOFT GARMENT WASH.
- MACHINE WASHABLE
- SPLIT BACK YOKE ENSURES SMOOTH CONTOURED SHOULDERS, AND A GREATER RANGE OF MOTION.

- SMALL CUT-AWAY COLLAR.LIGHTWEIGHT INTERLINING. FOR SOFT TOUCH.
- LONG SLEEVE. SOFT ROUND EDGE -CUFF EXTRA BUTTONHOLE FOR CUFF LINKS.
- CLASSIC, 2,5 MM-THICK BUTTONS.
- CURVED HEM.





REGULAR
2903401
S-4XL



SLIM FIT
2903402
S-XXL



WOMAN
2903403
XS-4XL

INDIGO BOW 34



100 WHITE



500 SKY BLUE



550 SKY BLUE STRIPE

It has the look of a classic woven dress shirt, but is in fact a knitted shirt. Combining the best of two worlds. This is the world's most comfortable good looking dress shirt. Feels like a t-shirt, styled like a Wall Street Wolf.

We makes this happen using high-end double 60 compact yarn, and a soft treatment. This gives the shirt a luxurious look and silky touch. Also, using high quality yarn in a knitted fabric, gives you a natural non-iron performance. Wash it, hang dry and wear. Simple.

We are confident in this new and innovative way of making fine-shirts. We look forward to develop more colors and patterns to the knitted program. Enjoy!

- INDIGO BOW LINE.
- INDIGO BOW LINE.
- PLAIN WEAVE, SOLID 2 TONE COLOR. 100% LINEN. SUPERSOFT GARMENT WASH. MACHINE WASHABLE
- SPLIT BACK YOKE ENSURES SMOOTH CONTOURED SHOULDERS, AND A GREATER RANGE OF MOTION

- SMALL CUT-AWAY COLLAR. LIGHTWEIGHT INTERLINING. FOR SOFT TOUCH.
- LONG SLEEVE. SOFT ROUND EDGE -CUFF EXTRA BUTTONHOLE FOR CUFF LINKS.
- CLASSIC, 2,5 MM-THICK BUTTONS.
- CURVED HEM.



J. HARVEST & FROST

C O R P O R A T E S H I R T M A K E R